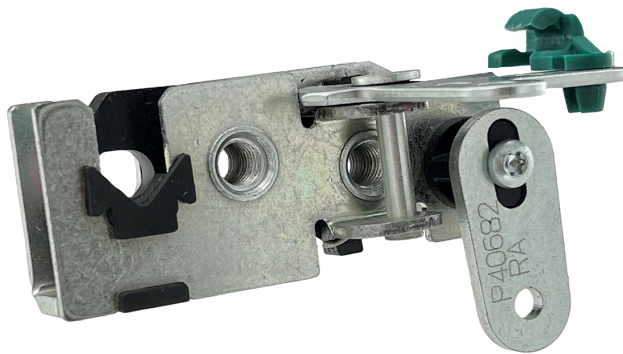


# 050-0550 8mm Single Rotary Mini-Latch



This new Rotary Latch Product Concept features a robust design that offers multiple actuation locations and anti-rattle feature in a compact design. Designed for light to medium-duty applications for on or off-highway applications, this single rotor latch will meet FMVSS 206 (ECE R11) load requirements.

#### **DESIGNED FOR:**

- Personnel and compartment door applications for on and off-highway vehicles
- UTV/SxS 1/2 and full doors
- Door closing forces of 156-223 N (35-50 lbs) (not recommended to exceed 334 N (75 lbs))

#### **Global Locations:**

**TriMark Corporation**  
500 Bailey Avenue  
P.O. Box 350  
New Hampton, Iowa 50659  
United States  
Tel: 641-394-3188  
Fax: 641-394-2392  
1-800-447-0343  
[www.trimarkcorp.com](http://www.trimarkcorp.com)

**TriMark Europe**  
Unit 3 Sence Court  
Bardon Hill  
Coalville  
Leicestershire LE67 1GZ  
United Kingdom  
Tel: +44(0)1530 512460  
Fax: +44(0)1530 512461  
[www.trimarkeu.com](http://www.trimarkeu.com)

**TriMark (Xuzhou)**  
Building A5 Jingwu Road  
Xuzhou Economic  
Development Zone  
Xuzhou, Jiangsu  
221004 PR China  
Tel: +86 516 8773 0018  
Fax: +86 516 8773 0058  
[www.trimarkcn.com](http://www.trimarkcn.com)



TriMark. Interactive. Product. Selector



TriMark



TriMark Corporation



TriMark Corporation

#### FEATURES/BENEFITS:

- Compact size and shape allow maximum use of door space and minimizes visibility issues without compromising strength and robustness
- Anti-rattle design provides soft close/soft open for quiet operation
- Rotor provides for vertical clearance of strike allowing for door sag, misalignment and ease of installation
- Two position rotor for personnel door for FMVSS 206 (ECE R11) applications
- 8mm diameter automotive style hoop-type strike minimizes clothing snag hazard

#### AVAILABLE:

- Right and left hand configurations (right hand shown)
- Versions are available to allow direct actuation from exterior push button or pull handles and interior releases providing a simple, low cost and compact application
- With innovative barrel release for ease of use/installation
- Platform allows for reuse of TriMark's extensive selection of existing actuation levers reducing application engineering and tooling requirements

#### MATERIAL:

- Case halves: High-strength steel
- Rotor and catch: Heat treated fine-blanked steel
- Springs: Non-corrosive stainless steel

#### FINISH:

- Zinc plated, clear chromate steel components

#### INSTALLATION:

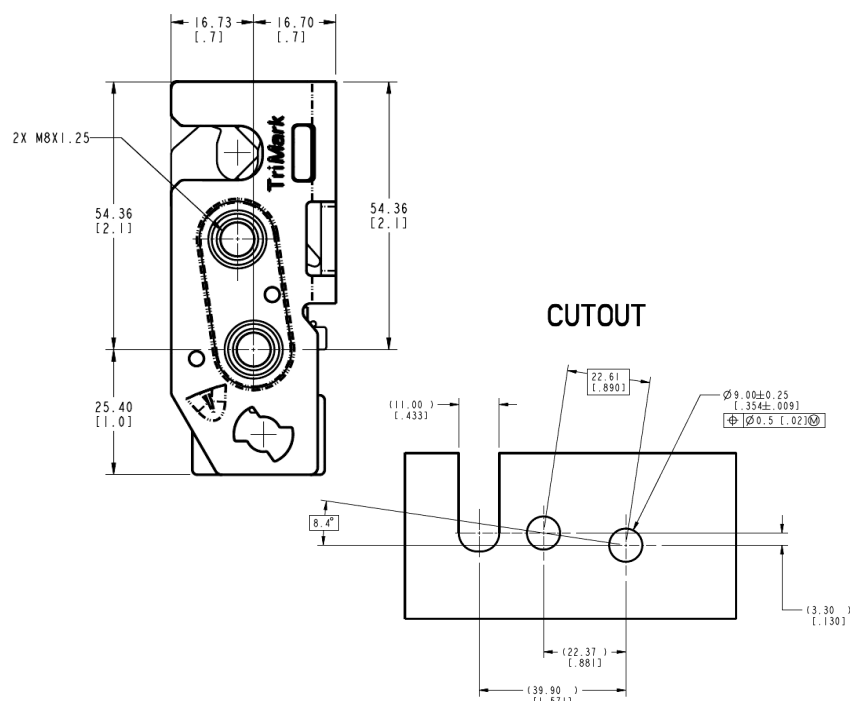
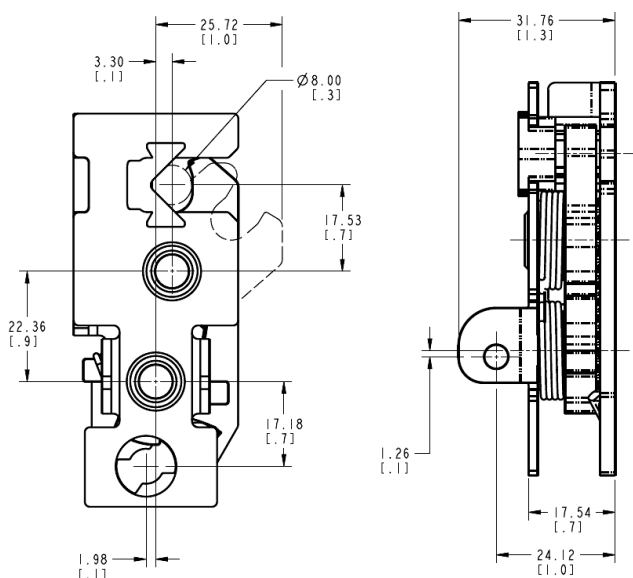
- Easy to install, mounts with (2) M8 x 1.25 class 8.8 or 10.9 fasteners are required for FMVSS 206 (ECE R11) applications (not included)
- Mount only to the front plate side
- Tighten to the manufacturer's recommended torque, however do not exceed 26.0 N-m (230.1 in. lbs)

#### USE WITH:

- TriMark 070-1000 8mm Hoop Strike (required for FMVSS 206 (ECE R11) applications)

#### Patent Pending

Individual part dimensions are for reference only. Refer to individual part drawings for complete dimensions, specifications, and installation procedures. Engineering assistance and application drawings are available.



ALL DIMENSIONS ARE FOR  
REFERENCE ONLY

For more information visit  
[www.trimarkcorp.com](http://www.trimarkcorp.com)